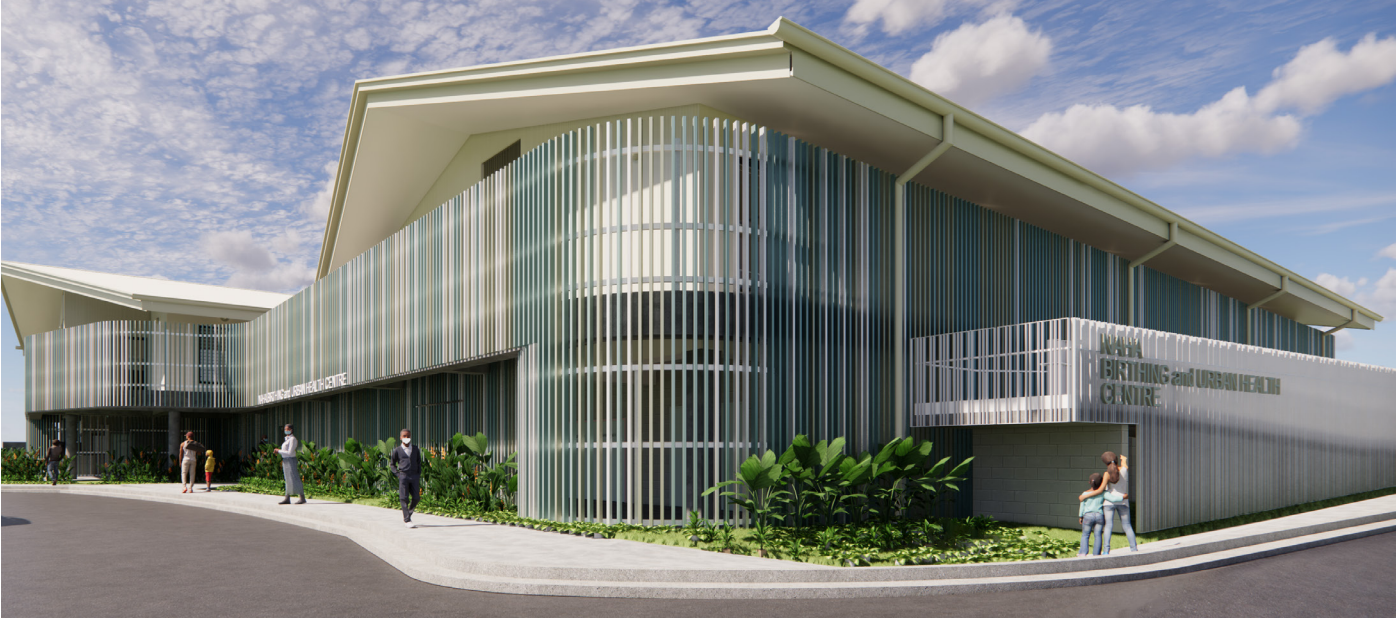








Fact sheet

Naha Birthing & Urban Health Centre



 34 beds	 Dental, ear & eye health	 Community pharmacy
 X-ray, ultrasound & operating theatre	 Large birthing suites with bathroom, laundry & garden access	 Large community room & family spaces

The Naha Birthing and Urban Health Centre is a flagship SBD150m investment in the health of Solomon Islanders, funded by the Australian Government and implemented by the Solomon Islands Infrastructure Program.

Quality care

The new and improved design was informed by consultation with people who will use the Centre, including women, doctors, nurses and midwives.

As a result, the new design is:

- Larger, with more beds and health services
- Built to last, resilient to floods, fire & earthquakes
- Built to be safe and accessible with buildings on the same level, connected by ramps
- Culturally appropriate with spaces for women, family and community.

Closer to home

The Centre will provide high quality birthing and health care services for Naha and surrounding Honiara communities. It will help reduce pressure on the National Referral Hospital for many primary health care issues and non-complicated births.

Next steps

A contractor will be confirmed in the coming months. Construction is expected to be completed in 2025.

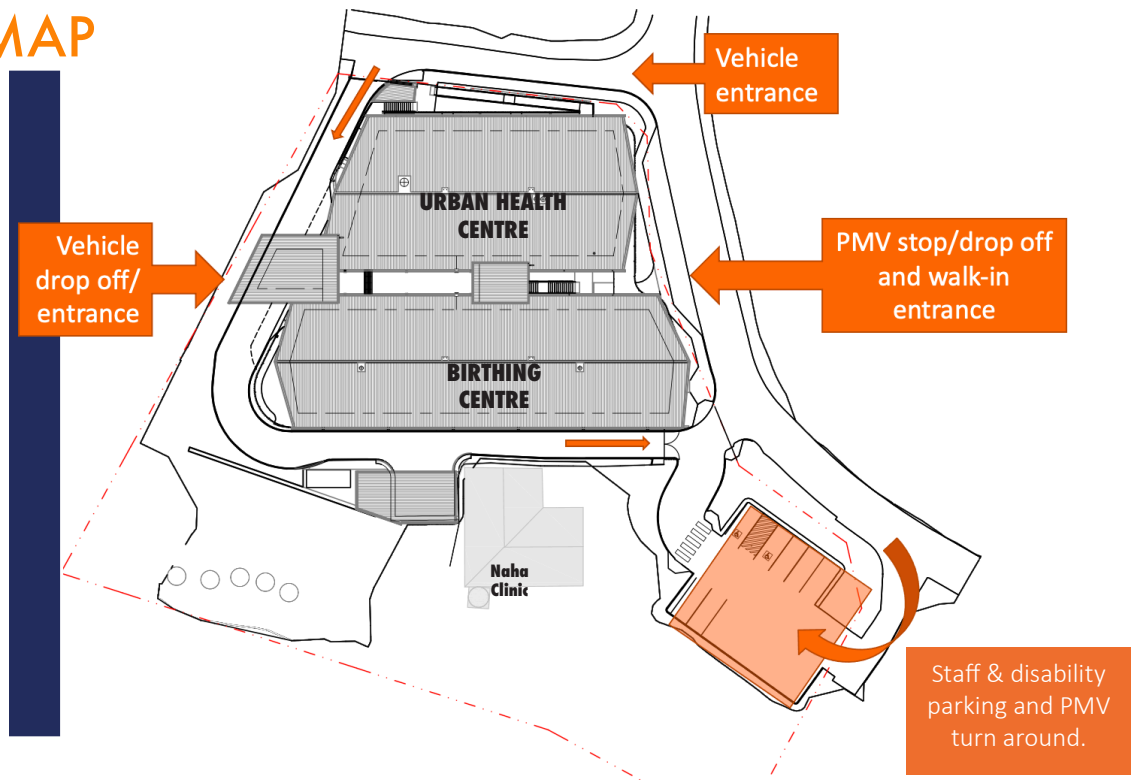


Quality care, closer to home, coming soon

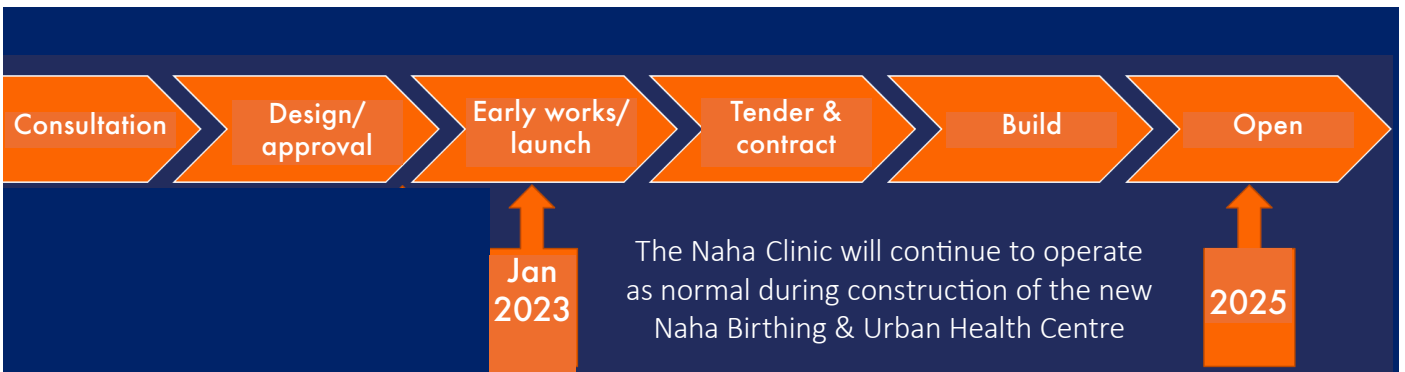


siip.com.sb

SITE MAP



PROJECT TIMELINE



For more information: [f /SIIPSols](https://www.facebook.com/SIIPSols) • siip.com.sb
info@siip.com.sb • 42970